

# SULKY®

100% RAYON / VISCOSE

Actual thread color may vary from printed color

1	1366	2	1086	3	*1077
	1321	*1063			1275
	1270	1331			1207
	610	1100			1287
	1229	1047			580
*1508		1276			*1046
*1211		1510			525
1228		1274			1286
*1156		*1049			640
1173		1279			571
1209		1280			*1503
1104		*1101			1281
1322		1278			*1230
1332		1718			*1517
1282		1277			*1208
*1177		*1051			538
630		569			1536
*1212		570			*1103
1272		*1079			1609
1271		1232			*1176
1273		*1174			1175
*1210					

\* Available in 30 weight

# GUNOLD®

Actual thread color may vary from printed color

4	1351	5	1095	6	1151
	*1001	*1094			1203
	1002	1252			1223
	1288	*1534			*1074
	*1045	1290			*1165
	817	861			1711
	1204	1253			1030
	1205	526			*1193
	1720	*1535			1033
	1305	*1143			*1080
	1285	1198			1255
	*1513	643			*1192
	*1090	1294			1308
	1206	505			607
	1096	1598			1309
	1251	*1043			534
	*1250	*1044			670
	1134	1182			*1189
	1291	524			1036
	*1172	1234			1264
	1284	1352			1214
	1283	*1005			1247
					1186
					1215
					1183

\* Available in 30 weight

# SULKY®

100% RAYON / VISCOSE

Actual thread color may vary from printed color

7	1197	8	1213	9	1068
	1199	1304			1113
	1200	1111			*1120
*1042		*1031			1064
1293		*1193			*1015
1728		1033			*1121
572		*1080			1225
1242		1255			*1115
1226		*1192			1148
1561		1308			1108
1254		607			*1224
1296		1309			1256
1235		534			1515
1301		670			*1109
1302		*1189			1511
1112		1036			1231
1299		1264			*1191
1297		1214			1307
1298		1247			1034
*1195		1186			*1119
*1122		1215			*1190
1194		1183			1310
*1032					1533

\* Available in 30 weight

# GUNOLD®

Actual thread color may vary from printed color

10	1188	11	1367	12	1022
	1257	*1065			1067
	1081	1238			*1061
	1558	1168			*1066
*1181		1314			1135
1117		1315			1167
*1154		*1078			*1023
1303		1184			1261
*1020		*1246			542
1016		1317			*1187
*1259		*1037			1124
619		1393			502
*1019		1319			*1083
*1258		*1147			1333
1017		561			1159
*1071		*1039			1262
*1082		1401			1334
520		1263			1549
836		1169			1260
1127		1311			1243
622		*1035			1244
*1070		1312			1227
868					1245

\* Available in 30 weight

# SULKY®

100% RAYON / VISCOSE

Actual thread color may vary from printed color

13	*1185	14	508	15	neon
	*1024	*1149			*1085
	*1137	*1128			1218
	*1025	*1055			1325
	567	688			1268
	523	1389			1236
	562	1269			1326
	1313	1180			1327
	1056	1265			*1011
	521	1266			1328
	1056	*1179			1465
	1320	*1170			501
	568	1267			1721
	1158	535			*1219
	1239	1058			*1040
	*1021	614			*1041
	677	*1057			1166
	621	*1129			*1220
	*1216	1130			1329
	1237	1323			1330
	1217	1324			1295
	1054	1131			1306
					1240
					1241

\* Available in 30 weight

# GUNOLD®

Actual thread color may vary from printed color

16	*2100	17	*2112	18	multicolor
	*2101	*2113			*2240
	*2102	*2114			*2241
	*2123	*2115			*2242
	*2104	*2116			*2243
	*2105	*2135			*2244
	*2106	*2103			*2207
	*2107	*2126			*2208
	*2125	*2117			*2210
	*2124	*2134			*2245
	*2108	*2118			*2246
	*2109	*2119			*2247
	*2132	*2120			*2201
	*2110	*2127			*2202
	*2128	*2133			*2209
	*2129	*2121			*2203
	*2131	*2130			*2206
	*2111	*2122			*2504
					*2204
					*2205

\* Available in 30 weight

### Table for Finding Color Numbers

Color Number	Col	Color Number	Col	Color Number	Col	Color Number	Col	Color Number	Col
501	15	*1042	7	1148	9	1225	9	1291	6
502	12	*1043	5	*1149	14	1226	7	1292	6
505	5	*1044	5	1151	6	1227	12	1293	7
508	14	*1045	4	*1154	10	1228	1	1294	5
520	10	*1046	3	*1156	1	1229	1	1295	15
521	13	1047	2	1158	13	*1230	3	1296	7
523	13	*1049	2	1159	12	1231	9	1297	7
524	5	*1051	2	*1162	4	1232	2	1298	7
525	3	1054	13	*1165	6	1233	4	1299	7
526	5	*1055	14	1166	15	1234	5	1300	8
534	8	1056	13	1167	12	1235	7	1301	7
535	14	*1057	14	1168	11	1236	15	1302	7
538	3	1058	14	1169	11	1237	13	1303	10
542	12	*1059	14	*1170	14	1238	11	1304	8
561	11	*1061	12	1171	4	1239	13	1305	4
562	13	*1063	2	*1172	6	1240	15	1306	15
567	13	1064	9	1173	1	1241	15	1307	9
568	13	*1065	11	*1174	2	1242	7	1308	8
569	2	*1066	12	1175	3	1243	12	1309	8
570	2	1067	12	*1176	3	1244	12	1310	9
571	3	1068	9	*1177	1	1245	12	1311	11
572	7	*1070	10	*1179	14	*1246	11	1312	11
580	3	*1071	10	1180	14	1247	8	1313	13
607	8	*1074	6	*1181	10	1248	6	1314	11
610	1	*1076	6	1182	5	1249	5	1315	11
614	14	*1077	3	1183	8	*1250	4	1317	11
619	10	*1078	11	1184	11	1251	4	1319	11
621	13	*1079	2	*1185	13	1252	5	1320	13
622	10	*1080	8	1186	8	1253	5	1321	1
630	1	1081	10	*1187	12	1254	7	1322	1
640	3	*1082	10	1188	10	1255	8	1323	14
643	5	*1083	12	*1189	8	1256	9	1324	14
670	8	*1085	15	*1190	9	1257	10	1325	15
677	13	1086	2	*1191	9	*1258	10	1326	15
688	14	*1090	4	*1192	8	*1259	10	1327	15
817	4	*1094	5	*1193	8	1260	12	1328	15
836	10	1095	5	1194	7	1261	12	1329	15
861	5	1096	4	*1195	7	1262	12	1330	15
868	10	1100	2	1196	6	1263	11	1331	2
*1001	4	*1101	2	1197	7	1264	8	1332	1
*1002	4	*1103	3	1198	5	1265	14	1333	12
*1005	5	1104	1	1199	7	1266	14	1334	12
*1011	15	1108	9	1200	7	1267	14	1351	4
*1015	9	*1109	9	1201	6	1268	15	1352	5
1016	10	1111	8	*1202	5	1269	14	1366	1
1017	10	1112	7	1203	6	1270	1	1367	11
*1019	10	1113	9	1204	4	1271	1	1389	14
*1020	10	*1115	9	1205	4	1272	1	1393	11
*1021	13	1117	10	1206	4	1273	1	1401	11
1022	12	*1119	9	1207	3	1274	2	1445	15
*1023	12	*1120	9	*1208	3	1275	3	*1503	3
*1024	13	*1121	9	1209	1	1276	2	*1508	1
*1025	13	*1122	7	*1210	1	1277	2	1510	2
*1028	6	1124	12	*1211	1	1278	2	1511	9
1029	6	*1126	13	*1212	1	1279	2	*1513	4
1030	6	1127	10	1213	8	1280	2	1515	9
*1031	8	*1128	14	1214	8	1281	3	*1517	3
*1032	7	*1129	14	1215	8	1282	1	1533	9
1033	8	1130	14	*1216	13	1283	6	*1534	5
1034	9	1131	14	1217	13	1284	6	*1535	5
*1035	11	1134	6	1218	15	1285	4	1536	3
1036	8	1135	12	*1219	15	1286	3	1549	12
*1037	11	*1137	13	*1220	15	1287	3	1558	10
*1039	11	*1143	5	*1222	6	1288	4	1561	7
*1040	15	*1145	6	1223	6	1289	6	1598	5
*1041	15	*1147	11	*1224	9	1290	5	1609	3

\* Available in 30 weight



Our **SULKY® Thread Kits** are made up of 27 mini-kings, in our most popular Sulky 40 rayon colors. Each spool is individually wrapped and displayed in a section box.

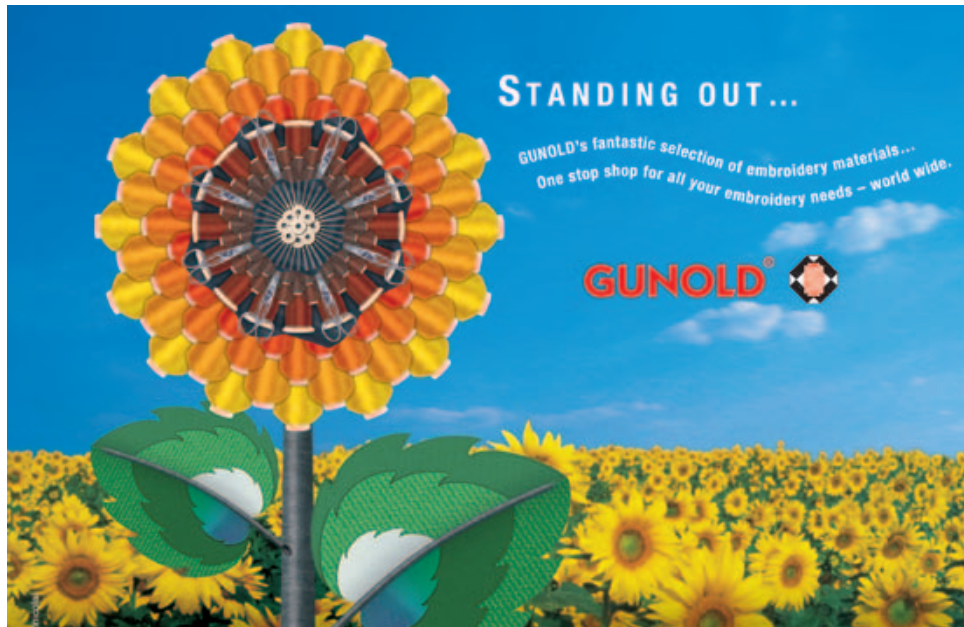
Article # 9410-27



Sulky assortment racks are available with 335 solid colors on three wooden racks. Each rack has 120 pegs to hold the 1,100 yard mini-king cones. The mini-kings are arranged to match the order of colors in the **SULKY®** color card. These useful wooden stands can stand upright or be hung on a wall. **Article # 9461SORT**

## GUNOLD® SULKY® 100% RAYON / VISCOSE

For exact color matching, thread color-cards are available for purchase.



### SPECIAL NOTICE

The Customer/Manufacturer should assure himself, by preliminary testing and evaluation, that the dye fastness of the thread is suitable for his intended uses. GUNOLD USA threads are manufactured and quality controlled to the very highest standards possible. However, since we have no control over washing, dry cleaning, pressing or weather conditions (when used on an article or item that will remain exposed to the elements), and since the value of the threads is so disproportional to the value of the material into which it is sewn, we are not and cannot be held responsible for any damage that may occur.

### GUNOLD USA, INC.

980 Cobb Place Blvd.  
Suite 130  
Kennesaw, GA 30144  
1-800-432-3781  
email: customerservice@gunold.com  
www.gunold.com

## GUNOLD®



## SULKY® 100% RAYON/VISCOSE



## SULKY® 100% RAYON/VISCOSE

The Viscose Embroidery Yarn  
of Outstanding Quality



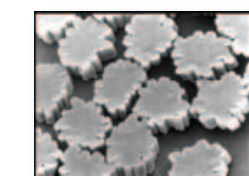
**GUNOLD is the only embroidery thread manufacturer in the world whose rayon is entirely made of 100% ENKA viscose in all colors and weights. For that reason, SULKY® has been awarded the prestigious ENKA gold label!**

**SULKY®**, made of 100% ENKA viscose (rayon) assures the embroiderer the highest quality and efficiency possible.

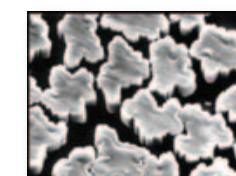
**SULKY®, the world's best viscose embroidery thread, has been**

**tested in laboratories to prove the high quality of ENKA viscose.**

Cross-sectional enlarged photos of viscose filaments prove that ENKA viscose is the foundation of the world's best viscose embroidery thread. ENKA viscose has regular, tooth-shaped or lapped cross-sections that are always the same size. Conversely, a "no name" viscose shows different shapes of filaments with strongly jagged outlines. Even filaments are the most important quality criteria for the refraction of light, cleanliness of the thread, consistent tensile strength and evenness of dyeing. This excellent refraction of light and cleanliness of the thread make **SULKY®** even more brilliant and shiny.



Cross-section of **SULKY** made of 100% ENKA viscose



Cross-section of "no-name" viscose from Asia

**SULKY®** guarantees consistent and perfect embroidery from the first to the last stitch. This creates yet another advantage - the embroidery design does not lose anything when put under high stress, resulting in a long-lasting, unique and excellent work of art.

## GUNOLD®

For exact color matching, thread color-cards are available for purchase.

**Washing Instructions SULKY®**

### Washing

All embroidered articles should be washed with mild laundering agents. If washed by hand, ample water should be used to allow the goods to move freely.

If necessary, **SULKY®** can also be washed with heavy duty detergents. However, some of these detergents may contain optical brighteners that can cause discoloration. Therefore, you should prefer detergents that have no additives of bleaching agents such as chlorine, peroxide or sodium carbonate.

It is important to thoroughly rinse the embroidery before wringing or dry spinning. Embroidered clothing should never be left lying in a damp or wet pile. Both of the above apply in particular to embroidered items that are washed for the first time.

### Dry Cleaning - Stain Removal

**SULKY®** may be dry cleaned.

The stain removers must not contain any bleaching agents or color removers if they come into direct contact with the embroidery. It is necessary to rinse the embroidery after stain-removing.

### Ironing

All embroidered items should be ironed on the reverse side or between two pieces of cloth.

### GUNOLD® Other Fine Products

- POLY®** 100% Polyester
- COTTY®** 100% Cotton
- FILAINE™** 100% Acrylic
- METY™** Metallic Thread
- BOBBINS** Bobbin Thread and pre-wound bobbins in Cotton or Synthetic

**BACKING/STABILIZER** Non-Woven Embroidery Backing

**GUNOLD SOLVY®** Water-Soluble Plastic Film e.g. for Knitwear

**THERMOGAZE™** Heat-Sensitive Woven Artificial Fabric

**BSN™** Heat-Seal Film "Iron-on rather than Sew-on"

**KK 100™** Temporary Spray Adhesive for Applications, contains no CFC

**KK 2000™** Non-Flammable Spray Adhesive

**KK 3000™** Vertical Spraying Spray Adhesive

**NEEDLES (ORGAN®)** Multipurpose Embroidery Needles

**SCISSORS** Embroidery Scissors in Various Styles and Sizes

**FASHION PRODUCTS** Fashionable Applications